



Mongolia

Immunisation and PHC Workshop

Tbilisi, July 26–27, 2022

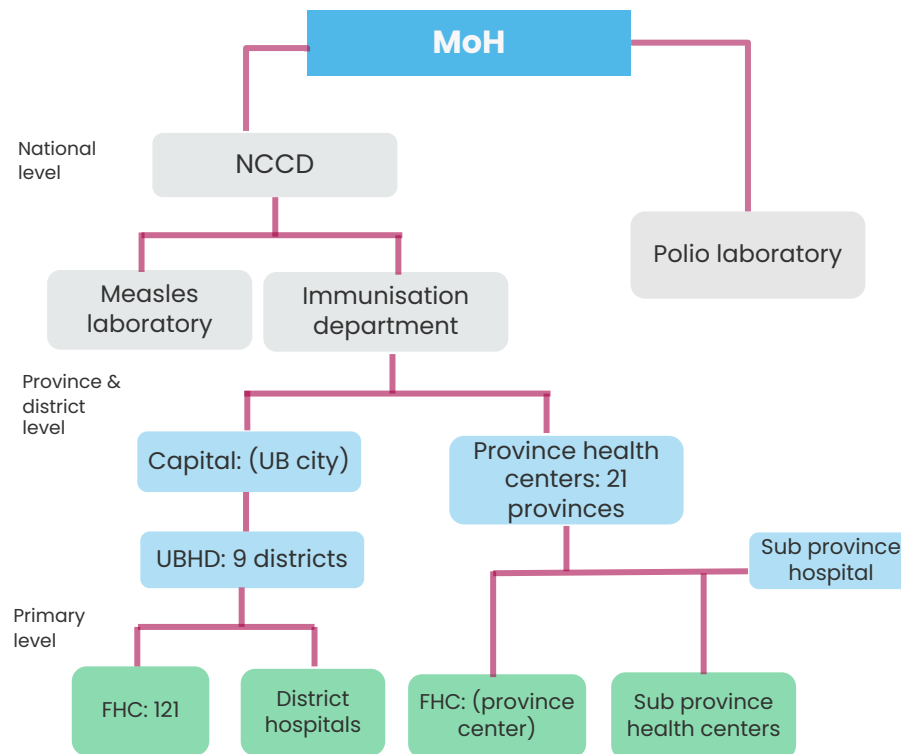


I. Key Measures

	2018	2019	2020	2021
Number of children under 1 year	77528	78247	76301	71659
Coverage with the first DPT dose under 12 m. (%)	99%	99%	98%	97%
Drop-out rate between the 1st and 3rd dose of DPT vaccine under 12 m. (%)	1,8%	2,5%	1,1%	3,6%
Coverage with the first DPT dose w/t age restriction (%)				
Drop-out rate between the first and third DPT dose w/t age restriction (%)				
Rota-1 coverage (%)	NA	NA	NA	NA
DPT-1 coverage* (%)	99%	99%	98%	97%
MCV-1 coverage timely (as per schedule) (%)	99%	99%	98%	97%
MCV-2 coverage timely (as per schedule) (%)	98%	98%	95%	93%
HPV full coverage (as per schedule) %	NA	NA	NA	NA
Zero dose children %				

source: National administrative data
*By 4 month of age

II. Immunisation Delivery Organogram



III. Service Delivery in Practice

Question	Yes/ Partially/ No	Example/ explanation
1. Immunisation as part of integrated package of services	Yes	It is part of national Immunization schedule
2. Integrated service delivery points	Yes	FHC, Rural and urban clinics, NCCD. Private clinics
3. Integrated services, over time	Yes	National Immunization Schedule is designed to reach children.
4. Integrated (coordinated) referral system	Yes	FHC, Rural and urban clinics, NCCD. Private clinics
5. a) Integrated HMIS b) identify child c) Screen vaccination status	a) Partially b) Partially c) Yes	a) Immunization's web based program from 2016, started registering people from 2018 and COVID vaccination from 2021. b) On the process of developing immunization's web based program; c) By their registration number
6. Motivation of HW (financial, non-financial; PHC and Public Health)	Yes	No incentives schemes; Doror (WHO, UNICEF, Gavi) supported capacity building activities create motivations to health workers
7. Sustainable capacity development of HW	Yes	3 months vaccination course, curriculum for undergraduate education
8. Immunisation KPI for PHC performance measurement	Yes	KPI similar indicator to measure performance of measles, polio and national vaccination schedule

IV. Key Challenges and Solutions

Challenges	Explaining Factors	Possible Solutions	Way Forward <i>filled by end of the Workshop</i>
Human resources	Staff taking annual leave or quitting their jobs due to personal reasons such as finding another job	Hiring staff that will work permanently	
Expenses	Transport and staff expenses to reach and vaccinate target group which are distant and hard to contact	Sufficient expenses for mobile immunization activities	
Vaccine hesitancy	Minor anti vaccine group who are against vaccination due to allergies and severe reactions, etc.	Explanation of vaccination benefits	